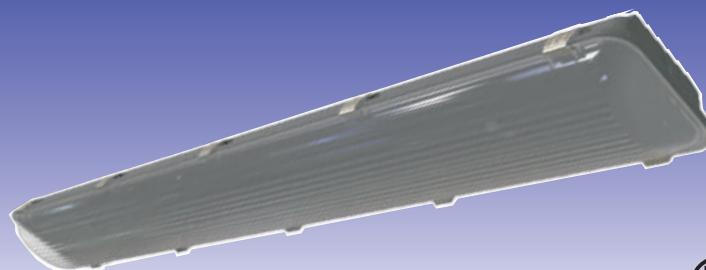


LED Vapor Tight With Emergency Power



Product Description

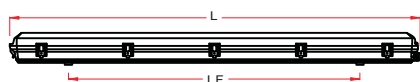
Widely used in Factory, Office, Workshop, Warehouse, Restaurant, Logistics Center, Exhibition Hall, Gymnasium, Supermarket, Other Places where need indoor or outdoor illumination.

- Low Bay LED Vapor Tight light housing major material are stainless steel, plastic, PC diffuser, it helps for cooling, reducing weight and uniformity lighting distribution.
- 80% more energy saving compared with fluorescent lamp.
- Grace shape and creative inspiration in its design.
- IP 65 water proof, more protective in wet location.

Common Technical Data

Color Temperature	2700K to 5700K	Input Voltage with ballast	100-277V
Beam Angle	120 degree	Frequency	50/60Hz
Color Consistency	4 steps	Power Factor	More than 0.99
CRI	More than 80	Life span	50,000 hours
Operation Temperature	-30-45°C	Led Type	SMT 2835
Efficiency with ballast	More than 135 LPW	Housing	Glass Fibre+PC
Emergency Battery Volume	5,200 mAH	Emergency Time	>3 Hours

Dimensions



ZY-STP8432-95W/ZY-STP8417-48W



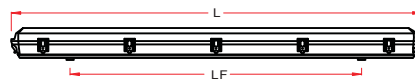
ZY-STP8232-35W



ZY-STPA224-50W



ZY-STP8332-72W



ZY-STP8132-24W

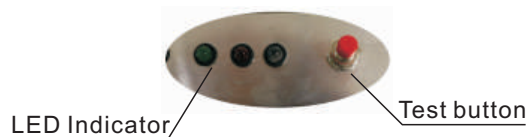


ZY-STPA124-24W

Detailed Technical Data

Model	ZY-STP8132-24W	ZY-STPA124-24W	ZY-STP8232-35W	ZY-STP8417-48W	ZY-STPA224-50W	ZY-STP8332-72W	ZY-STP8432-95W
Power	24W	24W	35W	48W	50W	72W	95W
Lumens	3503	3509	5431	6821	6843	10214	13254
Emergency Lumens	1040 \pm 50	1040 \pm 50	1040 \pm 50	1040 \pm 50	1040 \pm 50	1040 \pm 50	1040 \pm 50
Size(cm)(LxWxH)	126.8x10x11.5	123.2x8.5x7.1	126.8x16.5x11.5	66.8x44.1x11.5	123.2x10.4x7.8	127x26.4x11.5	127x44.1x11.5
Color Temp	2700K, 3000K, 3500K, 4000K, 4500K, 5000K, 5700K						
Housing	Glass Fiber and PC						
Operation Temp	-30°C to 45°C						
Life Span	50,000 hours						
Driver	Integrated driver						
Voltage range	AC100-277V						
Frequency	50/60Hz						
Beam Angle	120°						
CRI	>80						
PF	≥ 0.95						
Power Efficiency	$\geq 90\%$						
Dimming Function	0-10V						

LED Indicator Self-check

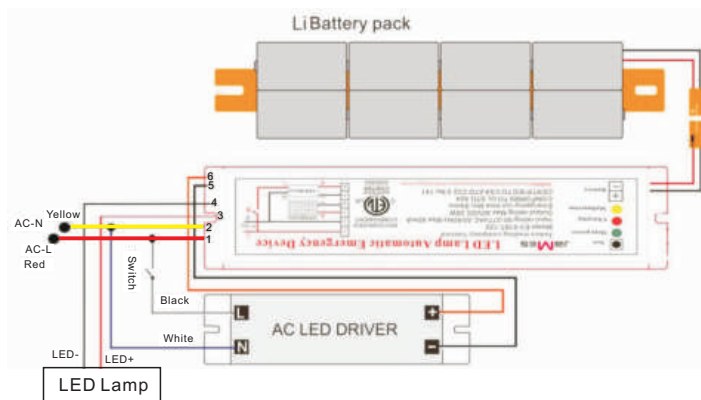


- Red LED on is charging
- Green LED on is main power working
- Yellow LED on is fault

Note:

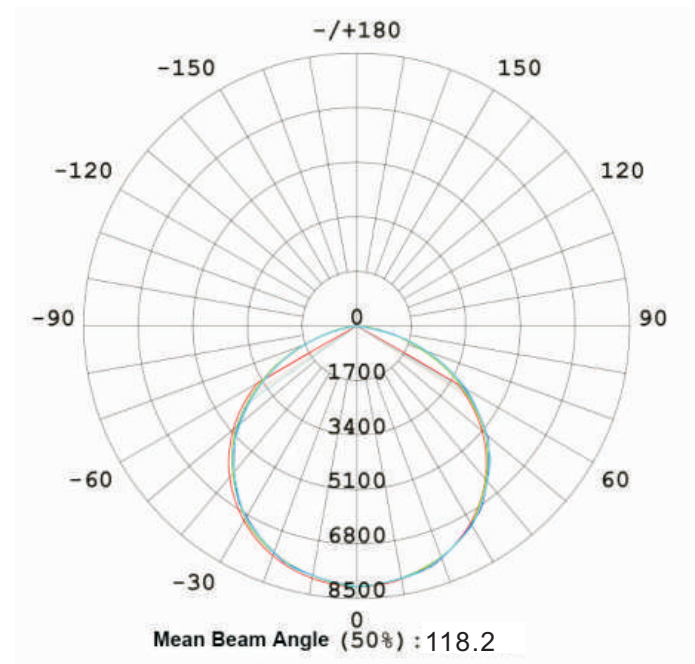
1. It's advisable to make one charge and discharge cycle in order to assure the max efficiency every 3 months.
2. Replace the battery every 3 years.

Wiring Diagram



Photometric Data

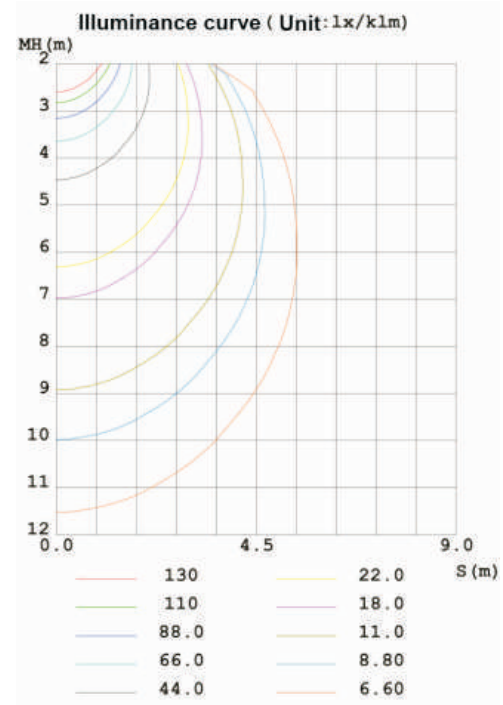
Rated Power	35W
Input Voltage	100 - 277VAC
Frequency	50 / 60 Hz
Power Factor	> 0.9
Beam Angle	120°
CRI	≥ 80
Dimming Function	0 - 10 V
Operating Temperature	-30°C +45°C



24W illuminance plots

Illuminance at a Distance			
	Center Beam fc	Beam Width	
17.0ft	15.45 fc	40.5 ft	40.1 ft
34.0ft	3.86 fc	80.9 ft	80.2 ft
51.0ft	1.72 fc	121.4 ft	120.4 ft
68.0ft	0.97 fc	161.8 ft	160.5 ft
85.0ft	0.62 fc	202.3 ft	200.6 ft
102.0ft	0.43 fc	242.7 ft	240.7 ft

■ Vert. Spread: 99.9°
■ Horiz. Spread: 99.4°



Ordering Guide

ZY

STPA/STP

8132-24W/8232-35W/8417-48W/124-24W/224-50W/8332-72W/8342-95W

Company Code

Housing

Wattage